

# **Europlanet Society Presentation to Swiss NCCR PlanetS General Assembly**

Tuesday, 26 April 2022

A stylized illustration of a solar system on a dark blue background. A large yellow sun is at the top left. Several planets of different colors (orange, blue, yellow, white, teal) are shown on elliptical orbits. A satellite is depicted in the center. The text 'eur PLANET 2024' and 'Research Infrastructure' is in the top right.

# eur PLANET 2024

Research Infrastructure

## Europlanet Society

- Membership Benefits
- Organisational Structure
- Committees & Working-Groups
- Regional Hubs
- Membership

› Europlanet RI 2024

- Created 2018 at General Assembly in EPSC in Berlin
- First operational year 2019 with ESF as executive office launch EPEC and Regional hubs EPSC/DPS Geneva
- THEN COVID 
- So still in construction and evolution, so we need members of community to help develop its direction
- Services are developing with Europlanet research Infrastructure – access to facilities, field sites, telescopes
- AISBL will form in 2022 (Centred in Brussels) as legal entity

## Access Resources

Members-only resources and webinars provide training and support on proposal-writing, opportunities to engage with policy-makers, information on funding opportunities and a platform to look for partner to form consortia for upcoming bids.



## EPSC Conference Discounts.

The largest planetary science conference in Europe. Members enjoy exclusive events and discounted conference fees.



## Expand Your Network.

Members can choose to be connected with researchers of similar interests or from the same institution.



## Early Career Network.

A highly active network of young professionals. By early-career researchers for early-career researchers.

Sponsored annual gatherings with training and workshops.

Numerous working groups including those on policy, diversity, future research, networking, beyond Europe and outreach.

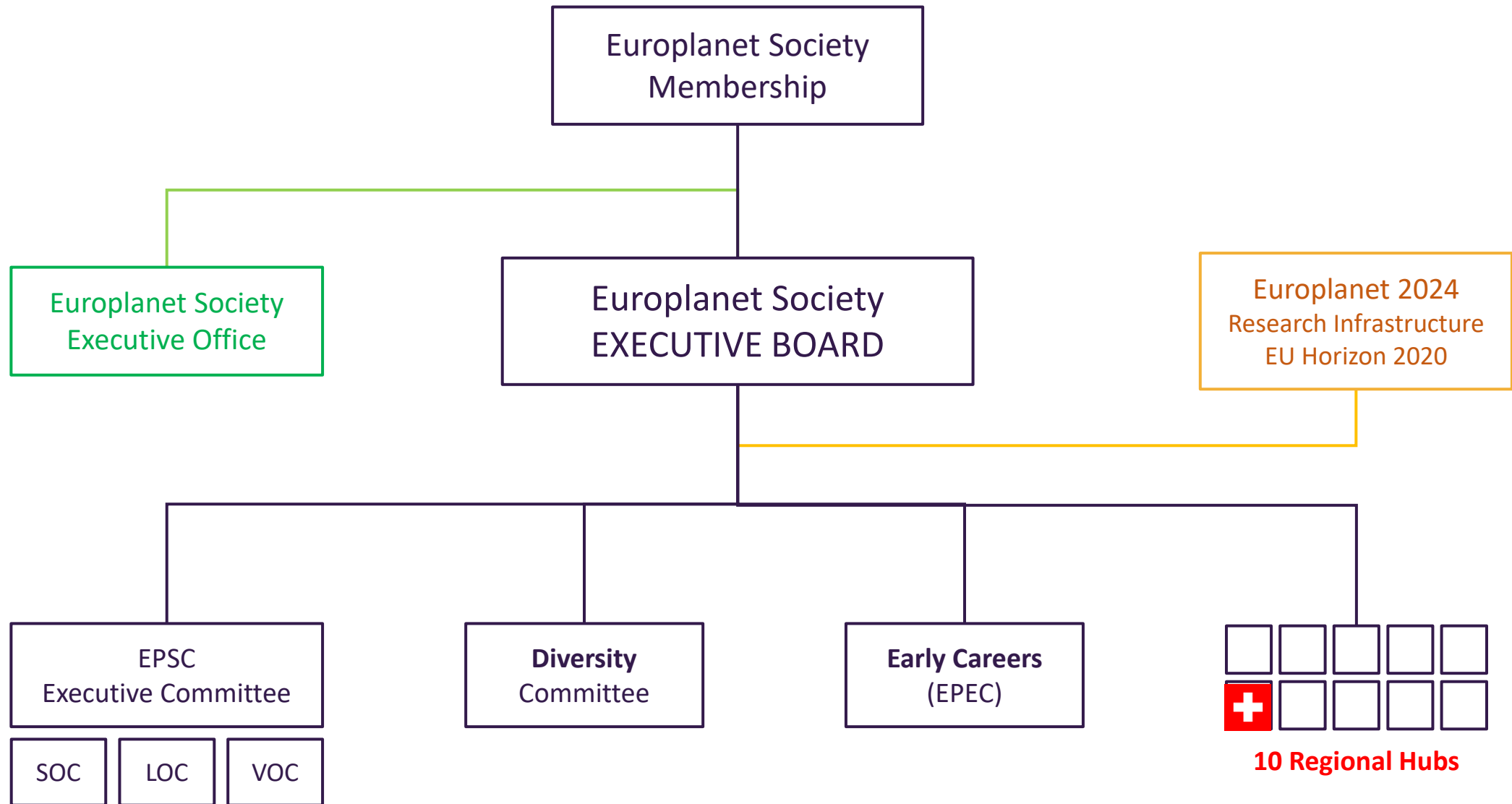


## Regional Hubs.

10 regional hubs organise networking events and workshops, and link with amateur astronomers, industrial partners and policymakers.







## PRESIDENT



Nigel  
Mason

## VICE-PRESIDENTS



Ann Carine  
Vandaele



Angelo Pio  
Rossi

## SECRETARY



Anita  
Heward

## TREASURER



Didier  
Moreau



Ricardo  
Hueso



Maria Cristina  
De Sanctis



Livia  
Giacomini



Lora  
Jovanovic



Leigh  
Fletcher



Ewa  
Szuskiewicz



The Europlanet Society is hosted by the European Science Foundation (ESF), a non-profit association located in Strasbourg, France.

The Executive Office manages the day-to-day activities and supports the governance of the Europlanet Society.

## COORDINATION



Jonas  
L'Haridon

## ADMINISTRATION



Mariette  
Vandermersch

## COMMUNICATION

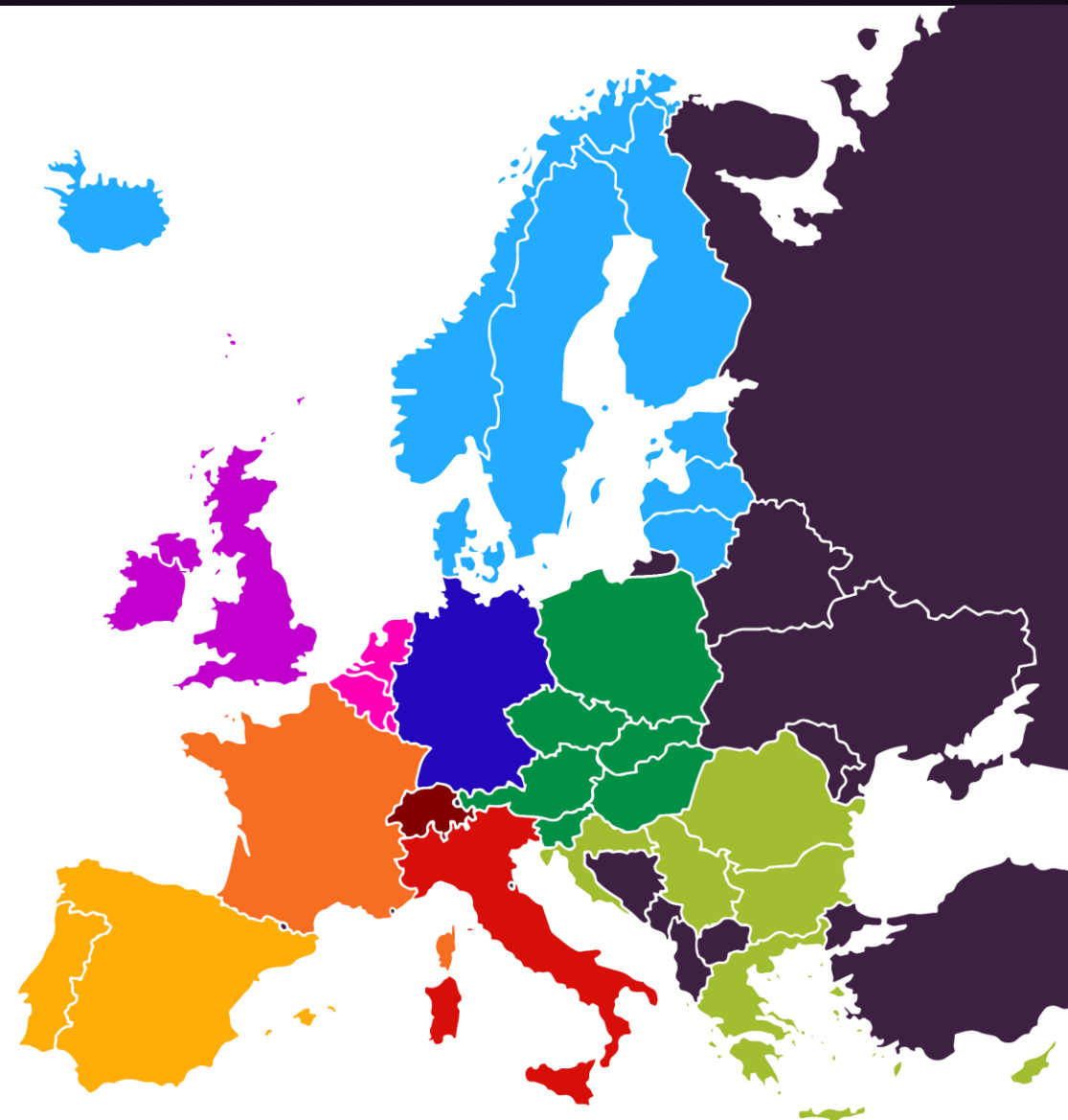


Shorouk  
Elkobros



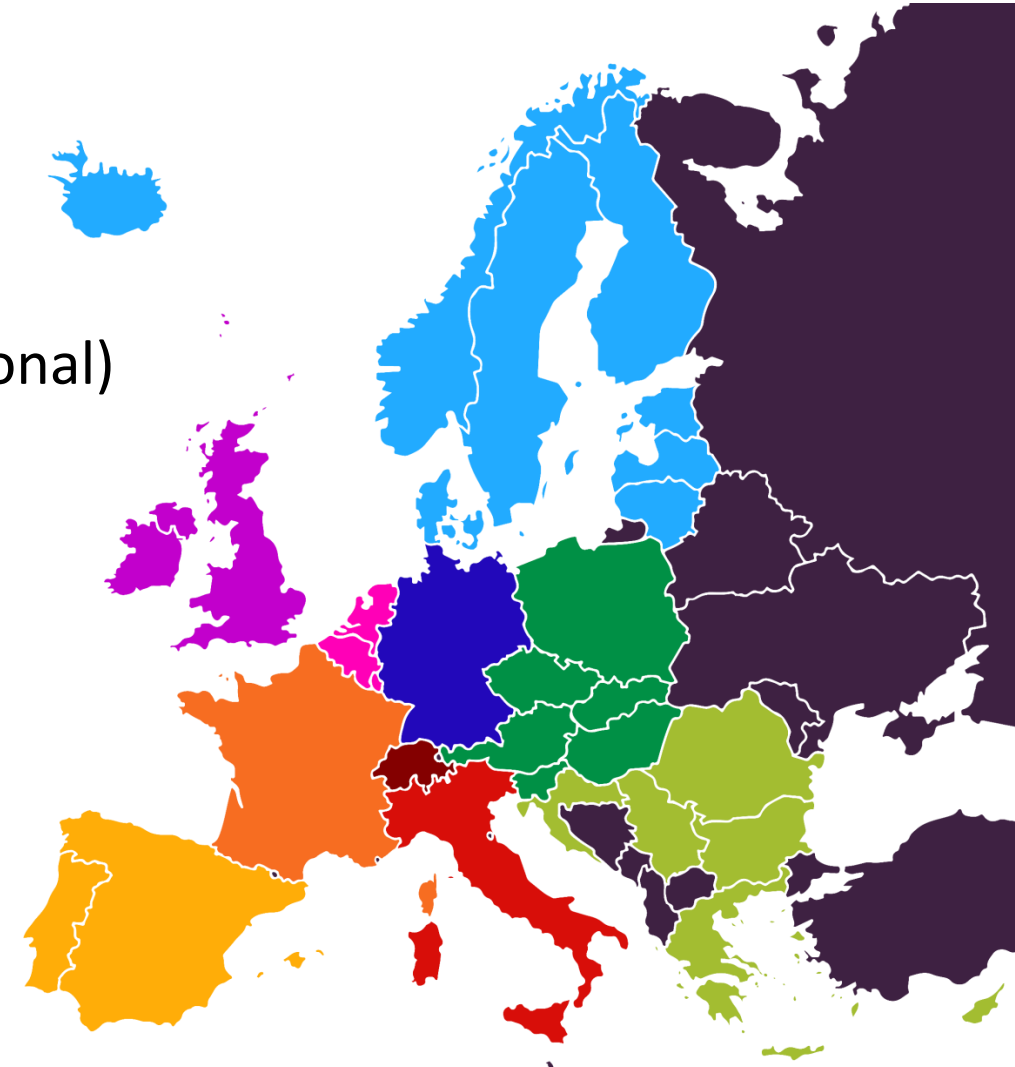
Board Representative: Séverine Robert (Benelux)

- |  |   |
|--|---|
|  <b>Benelux</b><br>Ann Carine Vandaele           |  <b>Italy</b><br>Maria Cristina De Sanctis                 |
|  <b>Central Europe</b><br>Andrea Opitz           |  <b>Northern Europe</b><br>Jonathan Merrison               |
|  <b>France</b><br>Susan Conway                   |  <b>Southeast Europe</b><br>Ioannis Daglis                 |
|  <b>Germany</b><br>Jörn Helbert                |  <b>Spain &amp; Portugal</b><br>Miguel A. Lopez-Valverde |
|  <b>Ireland &amp; UK</b><br>Nicholas Achilleos |  <b>Switzerland</b><br>Stéphane Udry                     |



## What do we want Regional Hubs to do?

- Direct contact with community - membership
- Help Europlanet Build relationships with regional (national) institutes
- Local events and outreach
- Develop industry links
- Early Career and Diversity support
- Shape direction of Society and membership



- We would like the Swiss Hub to have a full Committee \*by EPSC
- Chair, Vice-Chair, Early Career (EPEC) , Industry, Diversity, outreach officers
- Organise one at least one face to face event per year (may be joint with another meeting)
- Organise on-line events (seminars, webinars – may be joint with others, use existing forum)
- Budget 1000 Euros is allocated to spend as you wish.
- Applications to Society for outreach/ diversity events/activities etc



EPEC Network is led by early careers for early careers in the  
Europlanet Society international community



## EPEC COMMITTEE

Co-chairs: Ines Belgacem and Erica Luzzi

Committee Members: 33

Total EPECs now: 374





Monthly inspiring stories  
Outreach WG



Launched 8 motivational journeys  
Diversity WG



Articles and Interviews  
Future Research WG



Monthly "Raise your profile"  
Communications WG



PhD Video Contest  
Communications WG



Mentoring Support  
EPSC WG



Strategic task force to advise, coordinate and champion activities across the Europlanet Society that further the Society's commitment to **equality, diversity and inclusivity**.



The Committee consists of:

- Chair: Vic Pearson (Open University)
- Vice-chair: Solmaz Adeli (DLR)
- Secretary: Marina Molla
- Usually: EPSC LOC representative

Contact the Europlanet Society  
Diversity Committee:

[diversity@europlanet-society.org](mailto:diversity@europlanet-society.org)

Regional Hub Diversity Officers:

Benelux Hub

Arianna Piccialli (BIRA-IASB)

Central Europe Hub

Anna Łosiak (Polish Academy of Sciences)

French Hub

Loïc Rossi (LATMOS)

Switzerland Hub

Maria Schönbächler (ETH)



Germany Hub

Solmaz Adeli (DLR)

Italy Hub

Valentina Galluzzi (INAF)

Ireland and UK Hub

Gerard Hutchinson (STFC)

Northern Hub

Arnas Drazdauskas (Vilnius Univ.)

Southeast Europe Hub

Marina Molla

Spain and Portugal Hub

João Faria (IA, Porto)

The Europlanet Society also feature two Working-Groups:

› **INDUSTRY**

Chair: Marcell Tessenyi

› **OUTREACH**

› Outreach WG Chair: Federica Duras

The working groups need to have a representative from each Regional Hub)

Swiss Industry Representative: (Open)

Swiss Outreach Representative: Thibaut Roger



EPSC2022, September 18-23, Granada Spain

> **EXECUTIVE COMMITTEE**

Lena Noack (Chair) Nigel Mason & Anita Heward (outgoing)

>

**LOCAL ORGANISING COMMITTEE (LOC)**

Luisa Lara (Granada 2022)

> **SCIENTIFIC ORGANISING COMMITTEE (SOC)**

Stavro Ivanovski & Ákos Kereszturi

> **VIRTUAL ORGANISING COMMITTEE (VOC)**

Maarten Roos-Serote

> **VICE CHAIR** position is vacant and open for nominations



> Includes EANA meeting

> Will host Europlanet Society AGM

> Meeting of Regional Hubs







- › Working with ESA on strategy for 2025-2035. Input to HRSE.
- › MOU with **DPS** to formalise the collaboration between the two Societies, notably in organising the EPSC-DPC Joint Meetings (2023 in Antonio, Texas)
- › On-going discussions with sister organisations in Europe: **EAI, EAS, EGU**, etc.
- › **Global partnerships** Africa, Asia and Latin America
- › Collaborate with other Research Infrastructures in Europe on lessons learned, Horizon Europe funding and sustainability pathways **Expected joint bid in 2023-24**



STANDARD	REDUCED
Researcher & Industry Professional	Early Career*, Retired, Amateur & Outreach Community
<ul style="list-style-type: none"><li>✓ Access to 10 Regional Hubs &amp; Early Career Network</li><li>✓ Reduced fees for events (including EPSC)</li><li>✓ Member-only content</li></ul>	<ul style="list-style-type: none"><li>✓ Access to 10 Regional Hubs &amp; Early Career Network</li><li>✓ Reduced fees for events (including EPSC)</li><li>✓ Member-only content</li></ul>
<b>50€ /year</b> <b>SIGN UP</b>	<b>25€ /year</b> <b>SIGN UP</b>
Under-Represented States (URS) <b>25€ /year</b> <b>SIGN UP (URS)</b>	Under-Represented States (URS) <b>15€ /year</b> <b>SIGN UP (URS)</b>

## JOIN THE EUROPLANET SOCIETY!

[www.europlanet-society.org/join](http://www.europlanet-society.org/join)

## For Europlanet to be sustainable, we need:

### › Funding:

- Grow our membership numbers (above 1000), and encourage **space agencies, laboratories and research institutes to join as organization members** (which in turns provide individual memberships for their staff)
- Offset some of the shared costs with grant funding.
- Sponsorship for specific activities.
- **Regional hubs are vital part of this**

- › Legal entity: Europlanet is currently setting up as a non-for-profit association under Belgium law –(AISBL).
- › Strong engagement from the community, and volunteers for management posts. Europlanet cannot exists without it.
- › Planning for post 2024 RI and Horizon Europe programme.

- European 2024 Research Infrastructure launched in February 2020, funded at the level of 10M€ over 4 years
- The Europlanet 2024 RI is fully integrated with the Europlanet Society which is the long-term sustainable structure for the community.





- A distributed research infrastructure focused in Europe but including facilities and participants across 5 continents.
- The world's largest coordinated collection of planetary analogue **field sites, simulation and analysis facilities**.
- A suite of **virtual services** to provide access to planetary data, machine learning tools and specialist planetary mapping and space weather services.
- **Networking** activities to support the community
- Network of small **telescope facilities**.



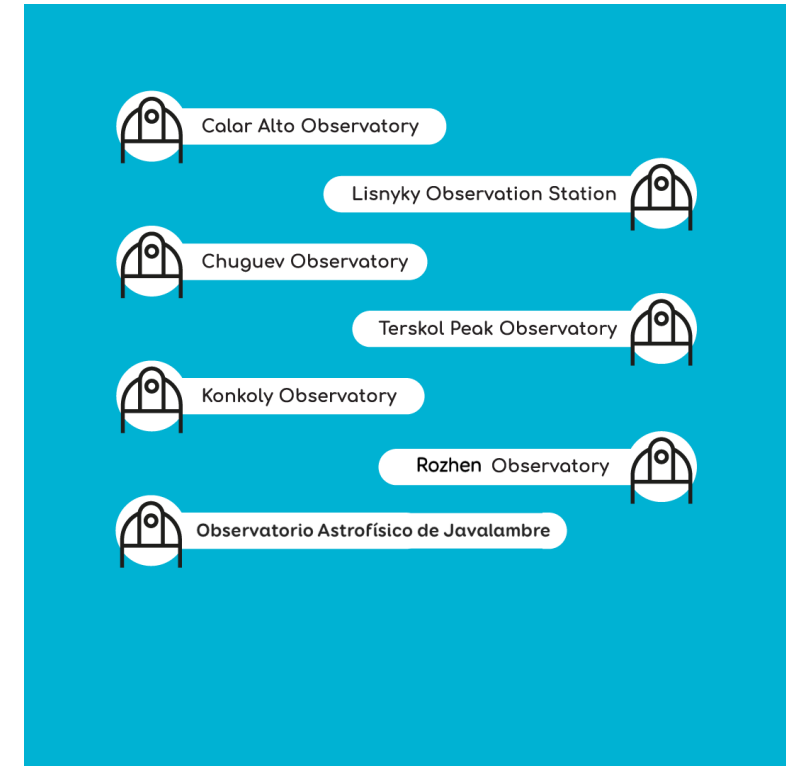
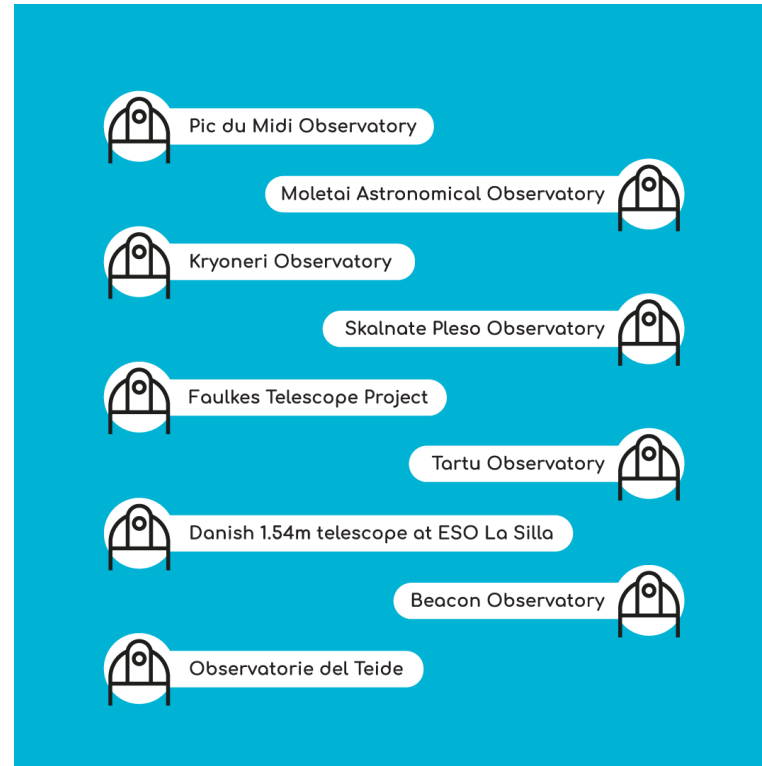
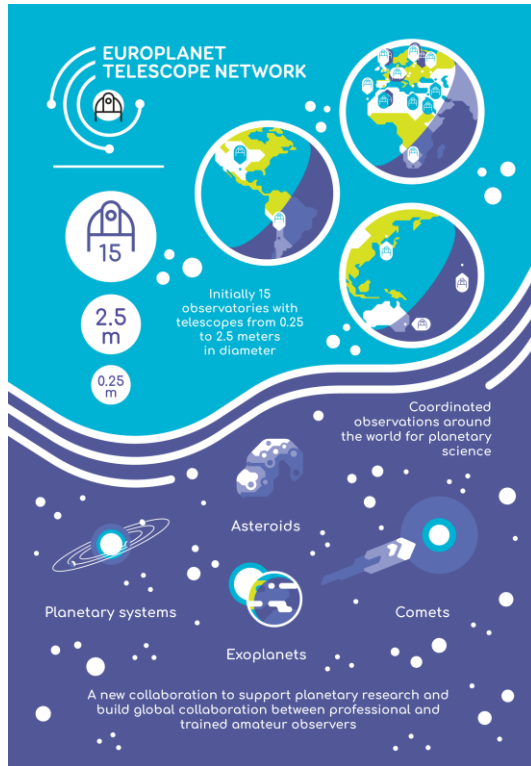


## NETWORKING ACTIVITIES (NA)

- **Community Support**

- Workshops, meetings and activities to engage with **industry**, support **widening participation** with under-represented communities, and **global collaboration** with communities beyond Europe
- **Funding** for expert exchanges
- Early careers **training** and **mentoring**
- Policy engagement and events
- Outreach and education **resources and training**





## Europlanet telescope network

### Open to new members

<https://www.europlanet-society.org/europlanet-2024-ri/telescope-network/>

## TRANSNATIONAL ACCESS (TA)

- FREE access to facilities and field sites. Anonymous applications peer reviewed.
- 5 field sites: Argentina, Botswana, Greenland, Iceland, Rio Tinto Spain (+Ethiopia)
- 24 Laboratories, many with multiple facilities in Europe
- 11 South Korean facilities accessible for next call for applications, opening in November 2020.





## VIRTUAL ACCESS (VA)



SPIDER (planetary space weather services)



VESPA (Virtual Observatory portal for 50+ planetary datasets)

*Wish to add relevant exoplanet databases*



GMAP (planetary mapping services)



Machine Learning (tools tailored for planetary data)

Find out more: <http://europlanet-2024-ri.eu>



**The Europlanet Society promotes the advancement of European planetary science and related fields for the benefit of the community. Join the Society for:**

- Access to 10 Regional Hubs
- EPEC Early Career Network
- Funding opportunities and bursaries
- Reduced fees for events, including the Science Congress (EPSC)
- Training, proposal-writing support & brokerage forming consortia e.g. for Horizon Europe
- European space industry and policy engagement (e.g. webinar discussions with ESA & EU).

Europlanet  
for



[www.europlanet-society.org](http://www.europlanet-society.org)

eur  **PLANET**  
SOCIETY